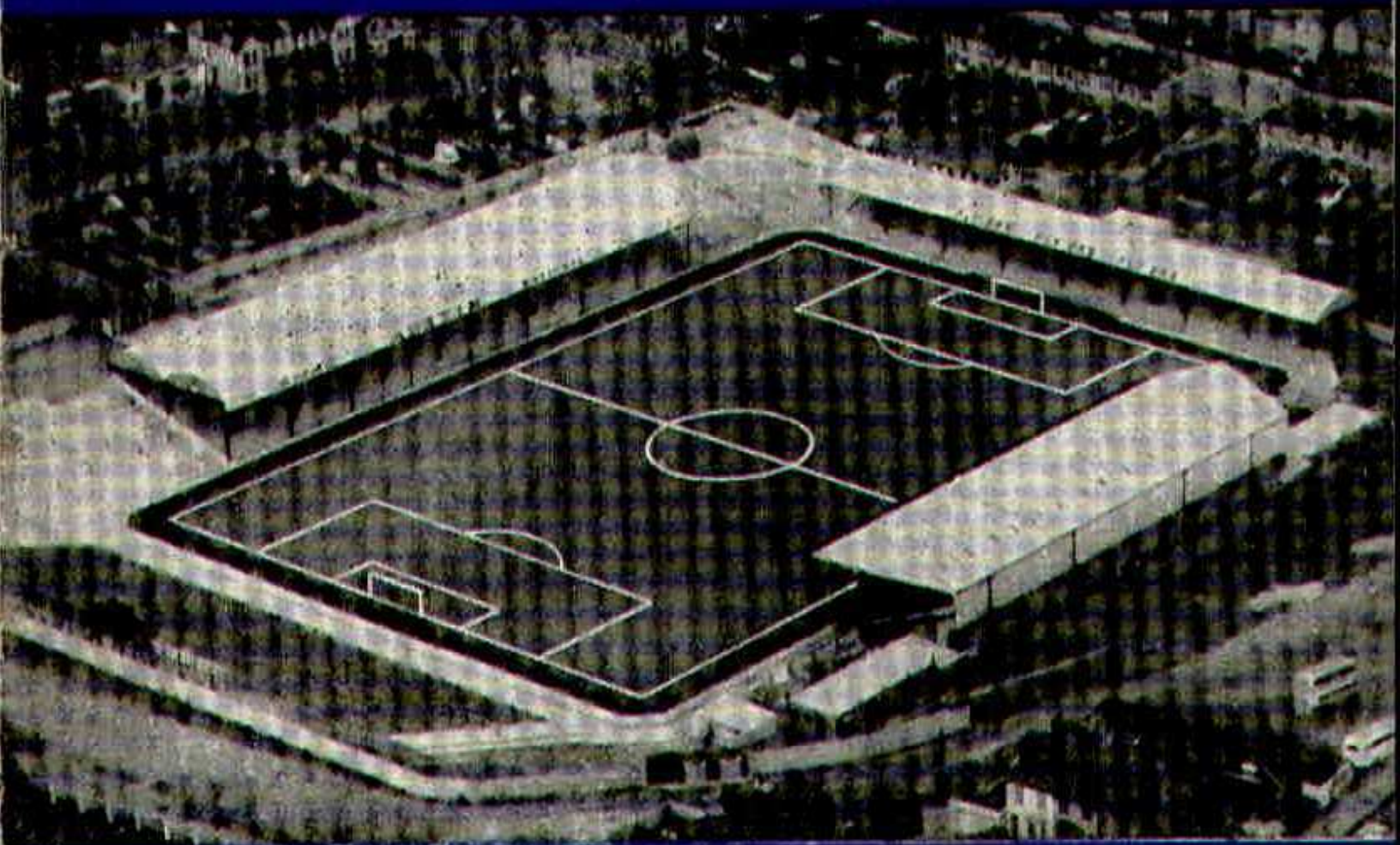


# **SOUTHEND UNITED FOOTBALL CLUB LIMITED**



**OFFICIAL PROGRAMME 4d.**



# L. L. WELFARE

97, 104 and 110 SUTTON ROAD  
SOUTHEND-ON-SEA

---

## ***Complete House Furnishers***

- ★ FURNITURE — CARPETS — BEDDING
- ★ BROADLOOM CARPETS FITTED FREE
- ★ WASHING AND DRYING MACHINES
- ★ TELEVISION — RADIO AND ALL ELECTRICAL  
EQUIPMENT ★ H.P. ★ FREE ADVICE
- ★ REFRIGERATION

### **Special! Special!**

Part-exchange your OLD HOME for NEW  
See our Second-hand Bargains

---

Telephone: 63401



# **Southend United Football Club Ltd.**

**ROOTS HALL FOOTBALL GROUND,  
VICTORIA AVENUE, PRITTLEWELL**

*Telephone: Southend 40707*

*President: C. O. BENSON*

*Directors: NELSON L. MITCHELL (Chairman), MAJOR  
A. I. HAY, M.B.E. (Vice-Chairman), ALD. H. W. COX,  
S. H. J. BATES, C. W. CLENSHAW, T. E. BAILEY,  
P. H. I. LEWIS*

*Manager: TED FENTON      Secretary: H. LEAPER*

*Hon. Medical Officer: DR. A. H. LEVERS*

*Hon. Chiropodist: H. A. COOK, M.CH.S.*

---

## **TO-DAY'S GAME**

**No. 19**

**Saturday, 6th April, 1963**

# **SOUTHEND UNITED**

**v.**

# **SWINDON TOWN**

**FOOTBALL LEAGUE DIVISION III**

**KICK-OFF 3.00 p.m.**

---

## **Future Attractions at Roots Hall**

**MONDAY, APRIL 8th, 1963**

**Kick-off 7.30 p.m.**

**COVENTRY CITY**

**(Football Combination)**

**SATURDAY, APRIL 13th, 1963**

**Kick-off 3.00 p.m.**

**ARSENAL v. NEWBURY PARK**

**SOUTHEND v. WEST HAM**

**(International Youth Tournament)**

**MONDAY, APRIL 15th, 1963**

**Kick-off 3.00 p.m.**

**BRISTOL CITY**

**(Football League)**



## FROM THE SECRETARY'S DESK

Today we welcome the current league leaders Swindon to Southend, and it recalls our last away defeat, way back on the 17th November of last year when the railwaymen beat us 4-1. Their record over the past few years at Roots Hall is little more than sensational, having won on their last five visits, scoring 12 goals to our 3.

From our point of view, our lads always give of their best when playing opponents near the top of the table, so we are hoping for a good game this afternoon, and perhaps for once the tables can be turned on Swindon.

Congratulations to the boys on their victory at Carlisle and their seventh away win of the season, this was another match where nearly all the play was in our opponents half, but the difference on this occasion was that our forwards were shooting harder, more often and more accurate than in past matches, and it was only the positional excellence of the Carlisle defence that kept our score down to two.

May I extend hearty congratulations on behalf of my Directors to the Southend schoolboys for their brilliant victory last Saturday at Roots Hall in beating Plymouth 1-0, and so enter the last eight of the English Schools Trophy. This is certainly an amazing achievement when you consider that there were nearly 350 entrants, and we wish them every success in their quarter-final tie at Blackpool.

Don't forget the Roots Hall roar this afternoon, and I mean roar of encouragement NOT of dissension. Swindon will be bringing quite a few supporters with them, but its your support I want to hear not theirs, so UP THE BLUES.

HARRY LEAPER

---

### GOAL SCORERS TO DATE

**Football League.** Beesley 14, Jones 12, McKinven 9, Woodley 7, Fryatt 5, Smith 2, McNeill 2, Kellard 1, Lee 1, Bradbury 1. Own Goals Crystal Palace, Hull City and Bristol Rovers.

**Football Combination.** Fryatt 16, Donovan 11, Brand 6, Kellard 5, Lee 2, Anderson 1, Banks 1, Liggitt 1, McKinven 1, Wall 1, Wright 1, Doherty 1. Own Goals Millwall.

---

**Turnstile operators required at Roots Hall for 1st Team matches. Must be accurate with figures and quick and accurate with cash. Write to the Secretary stating qualifications.**



**PRAMS**

**CYCLES**

**TOYS**

# LIDDIARDS

**300/304 Victoria Avenue, Prittlewell  
Southend-on-Sea**

**PRITTLEWELL'S LARGEST STORE**

*Established 60 years*

*Phone: 66472*



PRACTICAL  
PRINTERS

COMMERCIAL  
STATIONERY

*H. G. Leates Ltd.*

SOUTHEND 40271 (2 lines)

45-47 ALEXANDRA STREET, SOUTHEND-ON-SEA

IMPORTERS AND BOTTLERS OF  
WINES, SPIRITS and LIQUEURS

Large and VARIED STOCK

Being entirely free we have  
the pick of the market



**WOODFIELD WINE STORES LTD.**

BEERS  
LAGERS  
CYDERS  
MINERALS

Wholesale and Retail

88 LEIGH ROAD, LEIGH-ON-SEA

Telephone 78162



# SUPPORTERS' CLUB NOTES

## "JACKPOT" COMPETITION WINNERS

UNCLAIMED MARCH 9th — Since Claimed

Ticket No. J. 04148. Mr. Frampton, 46 Medway Crescent,  
Leigh. £5 - 18 - 0

SATURDAY, MARCH 23rd, 1963

Ticket No. M.08308. P. Blondun, 61 Tunbridge Avenue,  
Southend. £25 - 10 - 0

Ticket No. J. 03310. S. G. Young, 1 Byron Ave., Southend.  
£15 - 6 - 0

Ticket No. J. 01901. Mr. Edwards, 3 Browning Avenue,  
Southend. £7 - 18 - 0

Plus 3 Consolations at 10/- each

MONDAY, MARCH 25th, 1963

Ticket No. J. 00711. Mrs. Cressey, 17 Walton Road, Thorpe  
Bay. £3 - 15 - 0

Ticket No. J. 03634. W. Edwards, 68 Burdett Ave., Westcliff.  
£2 - 5 - 0

Ticket No. J. 05613. W. Starkey, 181 Ambleside Drive,  
Southend. £1 - 2 - 6

Plus 2 Consolations at 5/- each

SATURDAY, MARCH 30th, 1963

Ticket No. M.02174. A. Owen, 78 St. Benets Rd., Southend.  
£4 - 0 - 0

Ticket No. M.08009. H. R. Wilshire, 79 Boscombe Road,  
Southend. £2 - 8 - 0

Ticket No. M.08533. R. Tuson, Sutton Bridge Farm Rochford.  
£1 - 4 - 0

Plus 2 Consolations at 5/- each

MONDAY, APRIL 1st, 1963

Ticket No. H.01825. L. Hill, 38 Rayleigh Avenue, Westcliff.  
£6 - 10 - 0

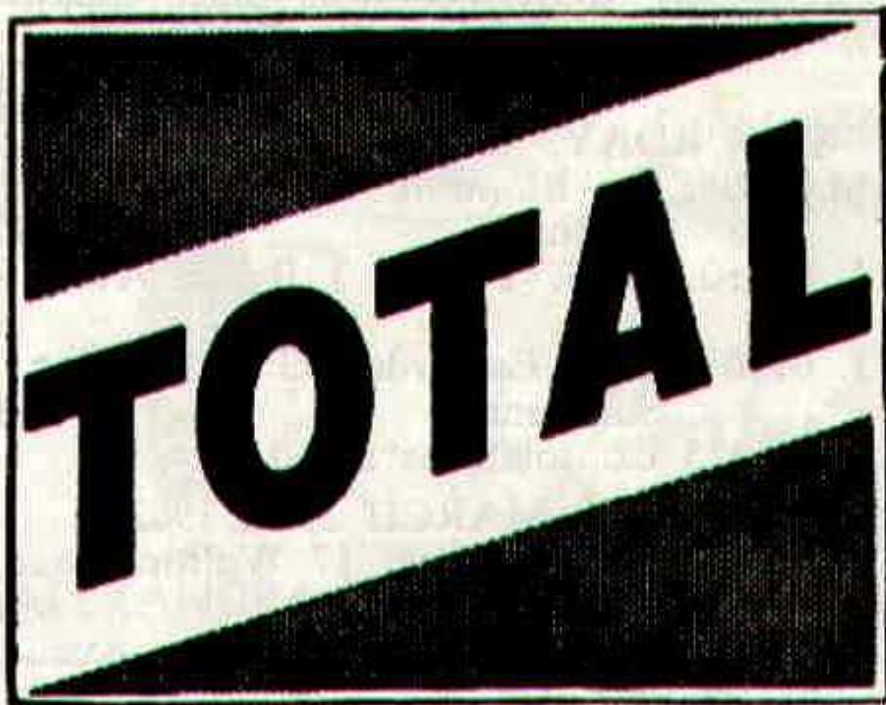
Ticket No. M.01950. H. Maddocks, 35 Cokefield Avenue,  
Southend. £3 - 18 - 0

Ticket No. M.02897. D. Gough, 33 Canfields, Shoebury  
Garrison. £2 - 0 - 0

Plus 2 Consolations at 5/- each



**LOOK FOR THIS SIGN**



**\* TOP-SELLING PETROL  
FROM THE CONTINENT**

**THE PETROL THAT HAS  
EVERYTHING**

**CRICKETFIELD SERVICE STATION LTD.,  
1081/7, LONDON ROAD,  
LEIGH-ON-SEA.**

**EASTERN AUTOS (SOUTHEND) LTD.,  
1163/7, London Road,  
LEIGH-ON-SEA.**



# HOW THEY STAND

Up to and including 2nd April, 1963						
	P.	W.	D.	L.	F.	A. Pts.
Swindon	35	17	11	7	68	43
Northampton	34	16	10	8	75	49
Peterborough	36	16	9	11	82	61
Coventry	31	15	12	6	59	48
Bournemouth	34	15	12	9	57	35
Notts C.	34	16	8	11	52	56
Wrexham	33	16	5	12	68	62
<b>SOUTHEND</b>	<b>32</b>	<b>15</b>	<b>7</b>	<b>10</b>	<b>55</b>	<b>53</b>
Hull City	32	15	6	11	57	51
Q. P. R.	32	14	6	12	65	52
Port Vale	31	15	7	11	46	42
Bristol C.	34	11	10	13	70	66
Shrewsbury	34	12	8	14	70	65
Watford	35	14	4	15	65	62
Millwall	32	10	12	10	57	58
Colchester	34	11	10	13	55	68
Brighton	37	10	10	17	52	68
Bradford	35	10	8	15	55	73
Barnsley	32	10	9	13	43	49
C. Palace	33	9	10	14	40	46
Bristol R.	35	11	6	16	50	64
Reading	32	11	4	17	56	60
Carlisle	33	8	8	17	45	65
Halifax	32	7	10	15	43	70

FOOTBALL COMBINATION						
Up to and including 1st April, 1963						
	P.	W.	D.	L.	F.	A. Pts.
Chelsea	28	15	9	4	55	30
Birmingham	24	13	6	5	56	25
Swindon T.	24	11	7	6	51	40
Millwall	22	12	4	6	42	24
Leyton O.	22	11	3	8	52	36
Portsmouth	24	10	5	9	49	38
Brighton	23	11	2	10	53	37
Bournemouth	25	8	8	9	38	47
<b>SOUTHEND</b>	<b>27</b>	<b>9</b>	<b>5</b>	<b>13</b>	<b>58</b>	<b>61</b>
Southampton	20	9	4	7	35	29
Coventry City	20	7	7	6	27	27
Q. P. R.	20	8	4	8	40	36
Brentford	24	8	4	12	43	50
Watford	22	6	7	9	39	48
Fulham	25	7	5	11	31	45
Aldershot	25	8	2	15	29	52
Charlton	22	8	1	13	40	71
Reading	25	2	7	14	35	59

Every time YOU see a MORRIS think of

# BEN JAY

AUTO SALES LTD.

Head Office and Showrooms: 1 CHALKWELL PARK HOUSE, LONDON ROAD.

Showrooms: 422 LONDON ROAD. Telephone 42156

Also at: ARTERIAL ROAD, Nr. Kent Elms Corner

Service and Works: 23 WEST ROAD, WESTCLIFF

USED CAR AND VAN SPECIALIST — CASH BUYERS

## YOUR MORRIS DEALERS

Any New or Used Vehicle  
Supplied



"The Local Press"

THE  
**SOUTHEND STANDARD**

Colours:

Blue and White

**SOUTHEND UNITED**

1  
Peter  
GOY

2  
Lou  
COSTELLO

4  
Tony  
BENTLEY

7  
Derek  
WOODLEY

8  
Ken  
JONES

3  
John  
NEAL

5  
Peter  
WATSON

9  
Jimmy  
FRYATT

6  
Terry  
BRADBURY

10  
Ian  
MCNEILL

11  
John  
MCKINVEN

Referee:

Mr. N. C. BURTONSHAW  
(Great Yarmouth)

Linesmen:

Mr. S. W. MUNDY  
(Reading) (Red Flag)  
Mr. R. A. BAKER  
(Beckenham) (Yellow Flag)





**Referee:**  
Mr. N. C. BURTENSHAW  
(Great Yarmouth)



**Linesmen:**

Mr. S. W. MUNDY (Reading) (Red Flag)  
Mr. R. A. BAKER (Beckenham) (Yellow Flag)

Cliff JACKSON 11  
Jack SMITH 10  
Bob WOODRUFF 8  
John TROLLOPE 3

Billy STEVENS 9  
Ken McPHERSON 6

Ernie HUNT 8

Mike SUMMERBEE 7

Keith MORGAN 4

Owen DAWSON 2

Mike TURNER 1

**Colours:**

**SWINDON**

**Red and White**

*Try us first when replacing*

Tel. Southend 557275 (10 lines)

# BEDFORD COMMERCIALS

are the Answer

**COLONIAL MOTORS (SOUTHEND) LTD.**

**Official VAUXHALL — BEDFORD Dealers**

COLONIAL HOUSE — HADLEIGH — ESSEX



# FIXTURES 1962-63

## FOOTBALL LEAGUE DIVISION III

1962	Opponents	Gd	F. A.	Attndce	Goal Scorers
Aug. 18	Watford	A	1-3	11,492	Beesley
20	Reading	H	2-0	8,994	Beesley, Woodley
25	Bradford	H	3-1	8,114	Jones(2), Beesley
29	Reading	A	3-1	8,381	Beesley(2), McNeill
Sept. 1	Coventry City	A	4-3	17,946	Beesley(3), Woodley
3	Shrewsbury Town	H	3-1	14,449	Jones(2), Lee
8	Bournemouth	H	0-1	13,614	
12	Shrewsbury Town	A	0-6	5,558	
15	Notts County	A	1-2	7,229	McKinven
17	Port Vale	H	2-0	11,000	Woodley, Smith
22	Colchester U.	H	2-3	11,632	Beesley, Smith
24	Port Vale	A	1-5	9,618	Kellard
29	Queens Park R.	H	1-3	12,660	Beesley
Oct. 1	Millwall	A	1-3	14,726	Beesley
6	Crystal Palace	A	3-2	13,236	Jones(2), o.g. C. Pal.
13	Wrexham	H	2-0	9,548	Woodley, Jones.
19	Halifax Town	A	1-0	5,953	Jones.
27	Bristol Rovers	H	3-2	9,328	McKinven (3).
Nov. 3	Brighton (Cup)	H	2-1	8,695	Jones, (2)
10	Carlisle United	H	2-0	8,851	Woodley, Beesley
17	Swindon Town	A	1-4	10,467	Beesley
24	Watford (Cup)	H	0-2	16,892	
Dec. 1	Barnsley	A	2-2	9,280	McKinven, Jones
8	Northampton T.	H	5-1	8,203	Beesley, McKinven(2), Woodley(2)
15	Watford	H	1-1	9,485	McKinven
26	Hull City	H	0-1	9,783	
29	Hull City	A	2-1	9,853	Fryatt, o.g. Hull City
1963					
Jan. 26	Brighton & Hove	A	0-0	11,814	
Mar. 2	Wrexham	A	1-1	10,344	Bradbury
9	Halifax Town	H	1-1	6,989	Fryatt
16	Bristol Rovers	A	2-1	7,213	Fryatt, o.g. Brist. R.
19	Bradford	A	2-2	7,136	Jones(2)
23	Brighton & Hove	H	1-1	8,990	Jones
30	Carlisle United	A	2-1	5,435	McKinven, McNeill
Apr. 6	Swindon Town	H	1-1	11,437	McKinven
8	Queens Park R.	A			
13	Peterborough U.	A			
15	Bristol City	H			
16	Bristol City	A			
20	Barnsley	H			
22	Millwall	H			
27	Northampton T.	A			
May 4	Colchester U.	A			
6	Peterborough U.	H			
11	Coventry City	H			
13	Notts County	H			
18	Bournemouth	A			
20	Crystal Palace	H			



## **OUTSTANDING VALUES IN ESSEX CANEWDON VILLAGE**

Attractively situated on a high elevation, a village garden estate shortly to be commenced, offering properties of a very contemporary design by a leading local Architect. As sole Agents, we have just received the first release of the development, which will offer 3 bedroom Houses with covered Car Port, large lounge with dining recess, well fitted kitchen, bathroom and separate toilet. Warm-air central heating and many modern features, i.e. open stairways, unlimited choice coloured floor tiles, etc., etc. Plans and Specification may be inspected at our office where experienced Staff will be pleased to discuss your requirements. Early application recommended.

A comprehensive selection of new and second-hand properties are available to you on application. Please write, 'phone or call.



### **WESTCLIFF ESTATE AGENCY**

315, London Road, Westcliff-on-Sea.

Tel: Southend 41778/47184.

#### **Branch Offices:**

11, Clarence Street, Southend-on-Sea.	Tel: 46551.
150, London Road, South Benfleet.	Tel: 2669/3449
61, New London Road, Chelmsford.	Tel: 2685/57625.



## FOOTBALL COMBINATION

1962	Opponents	Gd	F	A
Aug. 18	Swindon .	A	1	3
27	Southampton	H	0	2
Sept. 1	Aldershot	H	6	0
15	Brighton .	H	3	0
19	Leyton O.	A	0	4
29	Birmingham	A	2	3
Oct. 20	Brentford	H	4	2
27	Charlton	A	7	3
29	Fulham	H	2	2
Nov. 7	Portsmouth	A	0	6
12	Reading	H	3	1
17	Bournemouth	A	2	2
28	Coventry	A	2	3
Dec. 1	Watford	H	1	2
10	Queens Park R.	A	3	3
22	Chelsea	A	1	0
1963				
Feb. 9	Brighton .	A	4	5
26	Brentford	A	1	2
Mar. 2	Charlton .	H	5	2
11	Swindon .	H	1	3
13	Fulham .	A	1	2
16	Millwall .	H	2	1

18	Portsmouth	H	0	2
25	Leyton O.	H	1	1
27	Reading	A	1	1
30	Bournemouth	H	4	2
Apr. 1	Chelsea	H	1	4
8	Coventry	H		
16	Watford	A		
24	Aldershot	A		
27	Queens Park R.	H		
30	Millwall .	A		
May 8	Birmingham	H		
18	Southampton	A		

These Fixtures are the copyright of the Football League Limited and are printed by their permission under Licence No. 2. They must not be reproduced in whole or in part without permission of the Football League Limited.

Commentaries on all First Team matches are relayed to local hospitals by members of Southend Toc 'H'.

★ ★ ★ ★ ★ ★ ★ ★ ★ ★ ★ ★ ★ ★ ★ ★

★ Read the ★

★ **SUNDAY EXPRESS** ★

★ for the best reports ★

★ of all ★

★ **SOUTHEND UNITED** ★

★ **MATCHES** ★

★ ★ ★ ★ ★ ★ ★ ★ ★ ★ ★ ★ ★ ★ ★ ★



# COTGROVE'S

**RESTAURANT**

Established 1896

---

---

OPEN DAILY 12 noon to 9.30 p.m.

*Quality Food*

*Ample Portions*

*Fair Prices*

ROASTS — GRILLS

FISH and SHELLFISH

IN SEASON



**CRAB**

and

**LOBSTER**

**SALADS**

are Specialities

*And for your Extra Comfort!*

---

## THE GRILL ROOM

(12 noon—2.30 p.m. and 6 p.m.—9.30 p.m.)

*where the finest food is personally prepared  
by the Chef to your individual requirements*

**18 HIGH STREET, SOUTHEND-ON-SEA**

Telephone 68197



# PEN PICTURES

## SWINDON TOWN

**MIKE TURNER.** Just demobbed from the R.A.F. he joined the Club whilst still in the Services from Dorchester Town. Took over in goal following the injury to Mike O'Hara last season and is expected to make strong bids for the first team position this season.

**OWEN DAWSON.** Signed during the close season from Portsmouth. Was a former Youth International and is expected to challenge for first team honours this season.

**JOHN TROLLOPE.** A local boy who joined the Swindon ground staff from school. Was selected for the First Team at the beginning of the Season 1960/61, when he was 16 years old and was ever present during that season and last season.

**KEITH MORGAN.** A strong, attacking wing-half, who joined Swindon as a youth player from Westbury. Played in every first team game during 1960/61 and missed only three games last year through injury.

**KEN McPHERSON.** Signed from Newport County in August, 1961, he is a player with a reputation for hard work. Originally a Centre-forward he has proved he has the ability to take over in defence.

**BOB WOODRUFF.** Another local born player who came to the town direct from the Swindon schoolboys' team. Has played at Centre-forward and Inside-forward in the senior side and his performances have made him a target for several transfer offers.

**MIKE SUMMERBEE.** Born in Cheltenham, he is another product of the Swindon Youth policy. Formerly played at Centre-forward, but has now made the Outside-right berth his own. Another of the players wanted by several clubs.

**ERNIE HUNT.** Joined the Club's ground staff from school. A member of the First Team at 16 years of age, he is a player of outstanding ability for whom the Club has had many offers. A local boy, he was top goal scorer 1960/61 and again last year.

**JACK SMITH.** Joined the Robins from Watford during the 1960/61 close season. He was formerly with Hartlepool United. A strong, forceful player with the ability to get the unexpected goal.

**CLIFF JACKSON.** Swindon born, he joined the club direct from school. He was a schoolboy international and he made his debut in Swindon's first team at the age of 17. Has a very powerful shot.



The need of every household

**A Reliable  
Milk Supply**

**HOWARDS DAIRIES LTD.**

WESTCLIFF-ON-SEA

The Dairy with a Reputation  
Telephone: Southend 43311

**CHEAP DAY TICKETS TO &  
FROM LONDON**

ELECTRIC TRAIN SERVICES

TO AND FROM FENCHURCH STREET

Any Day — Any Train

From:— SOUTHEND (EAST) 9/6, SOUTHEND (CENTRAL) 9/-.  
WESTCLIFF 9/-. CHALKWELL 9/-. LEIGH 9/-.

TO AND FROM LIVERPOOL STREET

Saturdays and Sundays by any train

Monday to Friday by any train after 9.00 a.m.

Return by any train

From:— SOUTHEND (VICTORIA) 9/-. PRITTLEWELL 9/-.  
ROCHFORD 9/-. HOCKLEY 9/-. RAYLEIGH 9/-.

Full details from stations.

**BRITISH RAILWAYS**



**TODAY'S  
HALF  
TIME  
SCORE  
BOARD**

<b>A</b>	<b>ENGLAND</b>	<b>v. SCOTLAND</b>
<b>B</b>	<b>ARSENAL</b>	<b>v. NOTTS FOREST</b>
<b>E</b>	<b>FULHAM</b>	<b>v. WEST HAM</b>
<b>F</b>	<b>CARDIFF</b>	<b>v. CHARLTON</b>
<b>J</b>	<b>NORWICH</b>	<b>v. CHELSEA</b>
<b>K</b>	<b>BOURNEMOUTH</b>	<b>v. BRISTOL ROVERS</b>
<b>N</b>	<b>BRADFORD</b>	<b>v. WREXHAM</b>
<b>P</b>	<b>BRISTOL C.</b>	<b>v. HULL</b>
<b>C</b>	<b>COLCHESTER</b>	<b>v. CARLISLE</b>
<b>D</b>	<b>COVENTRY</b>	<b>v. HALIFAX</b>
<b>G</b>	<b>MILLWALL</b>	<b>v. PETERBOROUGH</b>
<b>H</b>	<b>NOTTS COUNTY</b>	<b>v. BRIGHTON</b>
<b>L</b>	<b>PORT VALE</b>	<b>v. NORTHAMPTON</b>
<b>M</b>	<b>SHREWSBURY</b>	<b>v. BARNLEY</b>
<b>R</b>	<b>WATFORD</b>	<b>v. CRYSTAL PALACE</b>
<b>S</b>	<b>BRENTFORD</b>	<b>v. TRANMERE</b>

## **FRANK WALTON & CO.**

**INSURANCE BROKERS**

**226 WEST ROAD, SOUTHEND-ON-SEA, ESSEX**

**Telephone: SOUTHEND 46251**

**For confidential advice or keenest quotations**

**50% No Claim Bonus — Motor**

**25% Reductions—Shops, Houses, Hotels, Employers Liability  
Pension Schemes                      Endowment Annuities**

**SERVICE AND SECURITY**



**PUBLIC OPINION**

**SAYS**

**THERE ARE NO**

**CRISPS**

---

**TO EQUAL**

**SMITH'S**

---

**FOR QUALITY AND FLAVOUR**



# KURSAAL

SOUTHEND-ON-SEA

## MODERN BALLROOM DANCING

WEDNESDAYS 7.30 to 11 p.m.  
SATURDAYS 7.30 to 11.30 p.m.

Phone:  
66276

Large & Small Halls  
Available for  
**CONFERENCES**

(FREE HOUSE)  
Full Services - Fully Licensed

Apply Secretary  
**KURSAAL**  
Southend - on - Sea



**Britain's BRIGHTEST Amusement Park**